

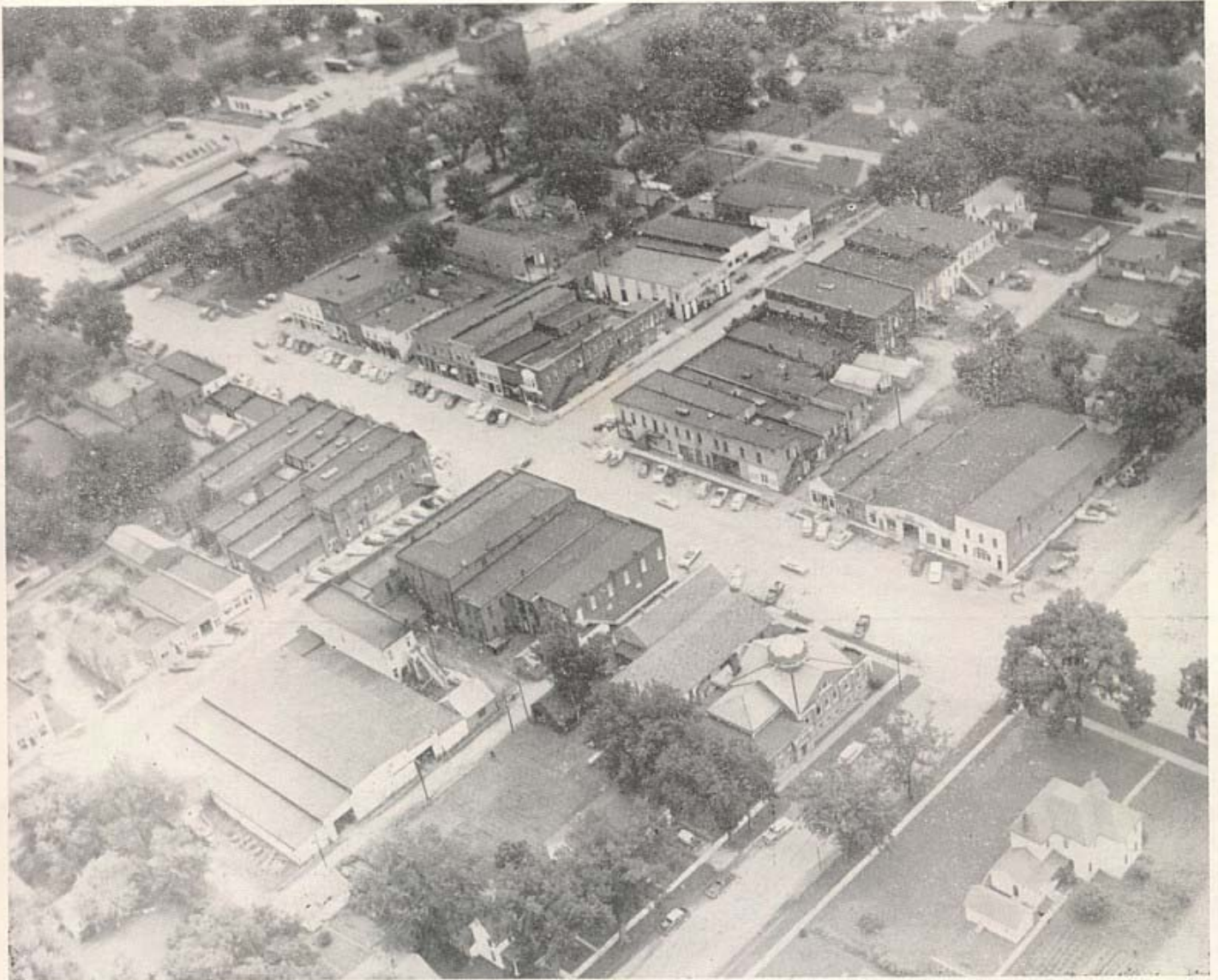
On Oct. 4, 1924 a contract for curb and gutter from the Christian church south on Center street was let to Kerr & Gough at \$1.16 per lineal foot.

On June 4, 1925 Cameron, Joyce & Co. was awarded the contract to pave East Walnut street at \$2.64 per square yard. The state highway department contributed to the paving of Center street the amount of money their own project would have cost for gravel pavement, and in addition contributed valuable engineering services.

During much of this important period of city progress, L. B.

Henderson served as city attorney and S. L. Dobyms as city clerk, and both were kept busy writing and revising ordinances, awarding contracts, issuing bills, attending many meetings of the council and attending to numerous details of their respective offices.

And so from the building of the first light plant in 1891 to the celebration of its 100th birthday, Shelbina has passed from the era of the coal oil lamp and the horse and buggy, and hopefully enters into its second century, grateful for the services of many citizens and many officials who have contributed to its growth and progress.



A good air view of Shelbina's main business section is shown here. Center street runs from the upper left corner where the Dobyms Lumber Co. can be located, past the depot with a freight train on the track. The east side of the street is clearly shown.

In the lower right hand corner is a good picture of Dr. C. O. Ransford's home, while just to the left and across the street the Christian Church is easily identified.

Walnut street runs from the lower left corner to the right center. Most every business house down town, other than those on Highway 36 to the west of the junction, can be easily located.