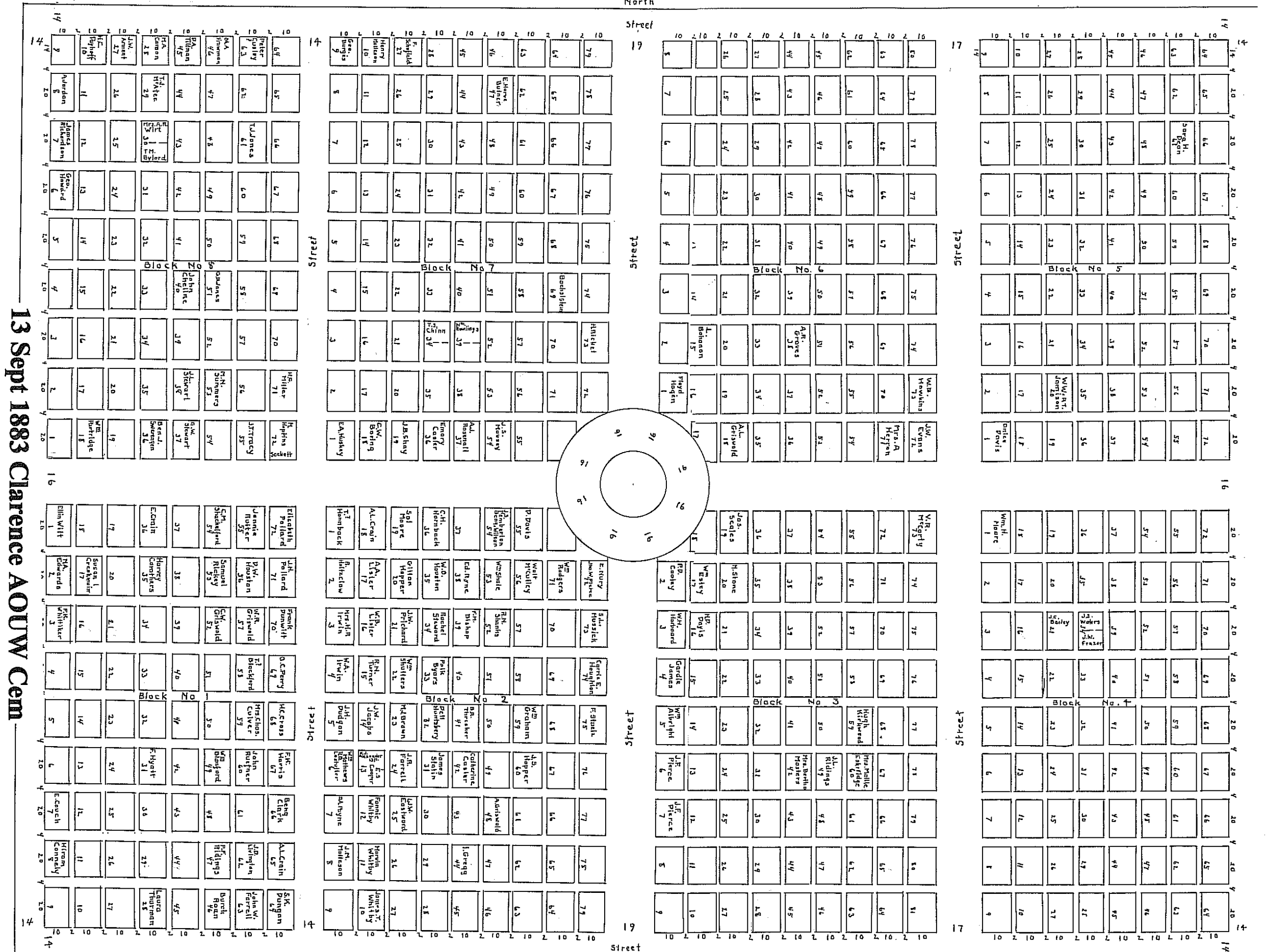


Cemetery Plat of Clarence Lodge Number 172, Ancient Order of United Workmen in the County of Shelby and State of Missouri, containing 5 3/8 A Commencing 30ft. East of the North West corner of Sec. 16 Township 57, Range 12, and running thence South 28 rods, Thence East 29 rods, Thence North 28 rods, Thence 29 West to the place of beginning. Situated in Shelby County Missouri. All lots in said Cemetery are 10 by 20 feet. Except the North tier of lots which are 10 by 14 feet. All alleys running North and South are 2 feet wide and the 1st. and 2d. street from the West running North and South are 14 ft. wide each, and the 3d 19, and the 4th 17 and the 5th 14 ft. in width. The alleys running East and West are 1 ft. wide. And the first street from the North, running East and West is 17 ft. wide, the second 16 ft. and the 3d 14 ft.



13 Sept 1883 Clarence AOUW Cem