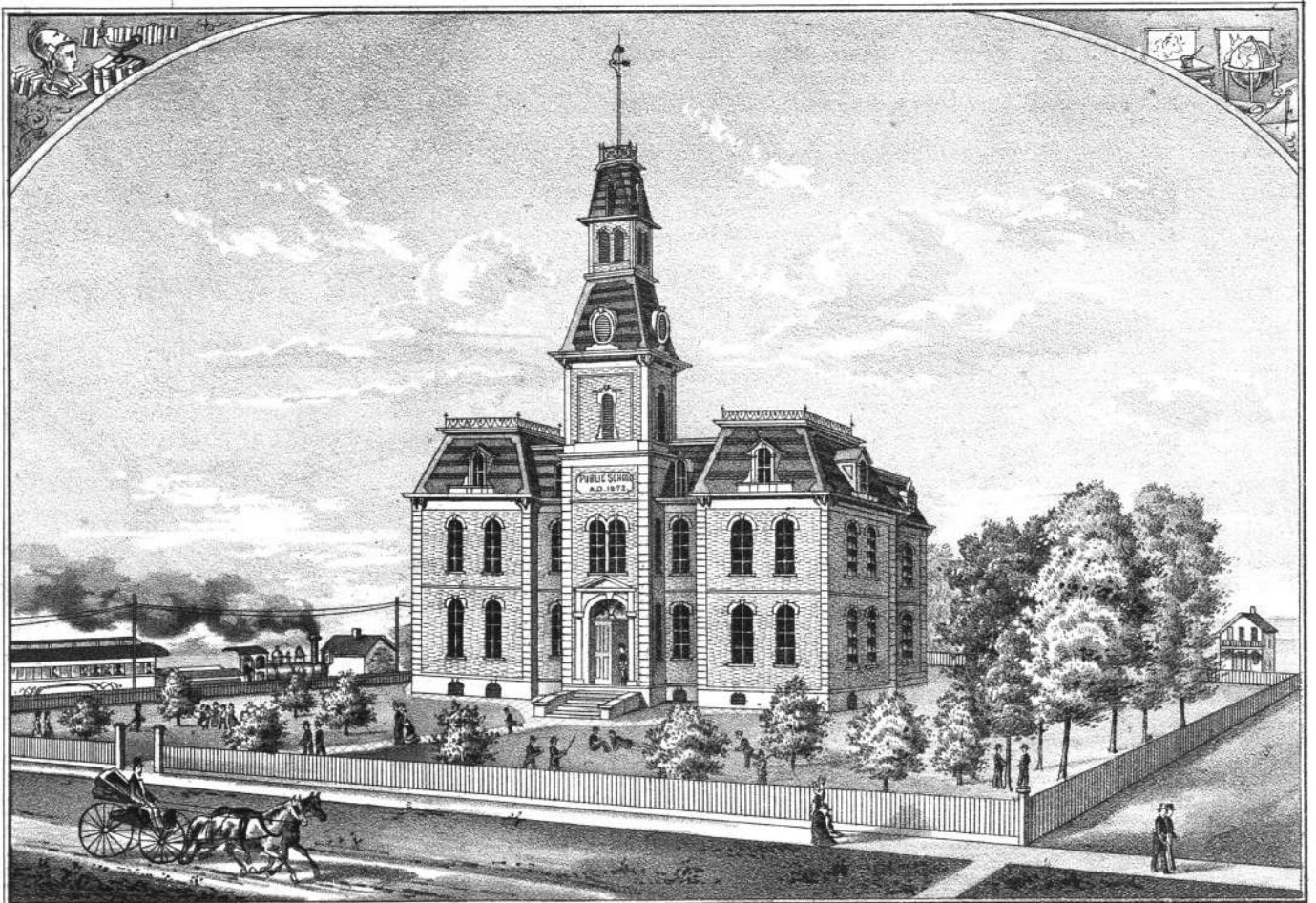
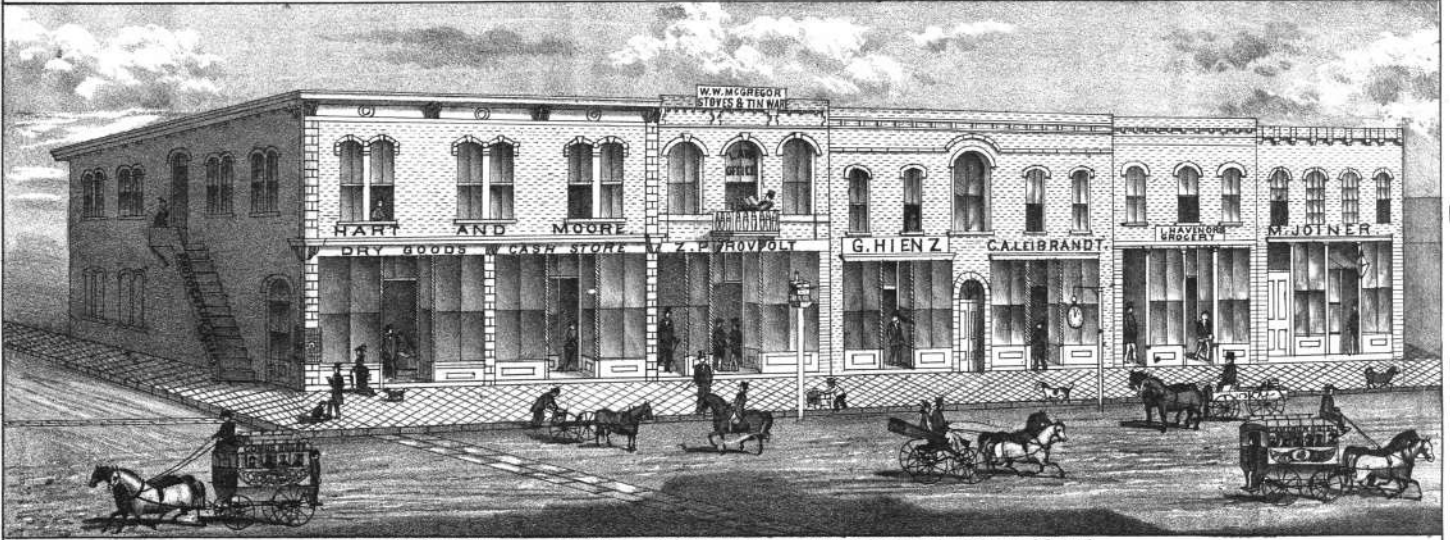


CLINTON COUNTY COURT HOUSE.



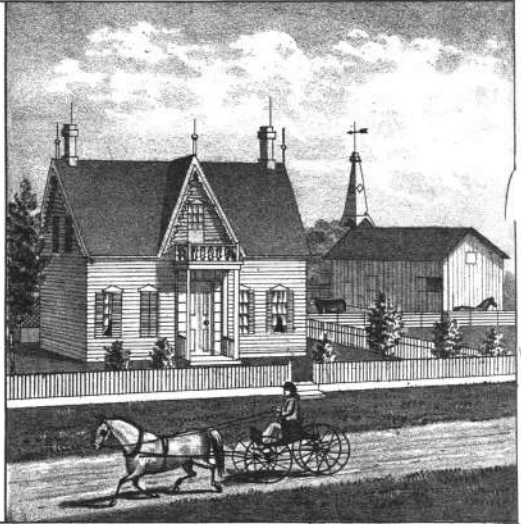
PUBLIC SCHOOL BUILDING,  
CAMERON, MISSOURI.



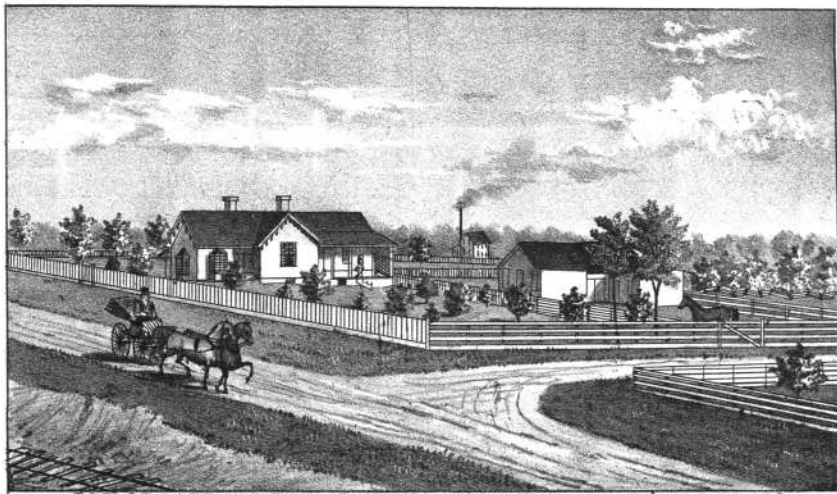
VIEW OF CENTENNIAL BLOCK, 3RD STREET, CAMERON, CLINTON CO. MO.



CAPT. JOSEPH TRUEX.



RES. OF CAPT. JOSEPH T RUEX, OSBORN, DE KALB CO. MO.  
 JOSEPH TRUEX, DEALER IN DRY GOODS, CLOTHING, HATS, CAPS, BOOTS, SHOES, GROCERIES,  
 HARDWARE AND AGRICULTURAL IMPLEMENTS. HIGHEST CASH PRICE PAID FOR GRAIN AND  
 ALL KINDS OF COUNTRY PRODUCE, OSBORN, MO



RES. OF CAPT. H. S. BUCK, BANKER, STEWARTSVILLE, DE KALB CO. MO.



*Yours truly  
Ed. W. Sumner*



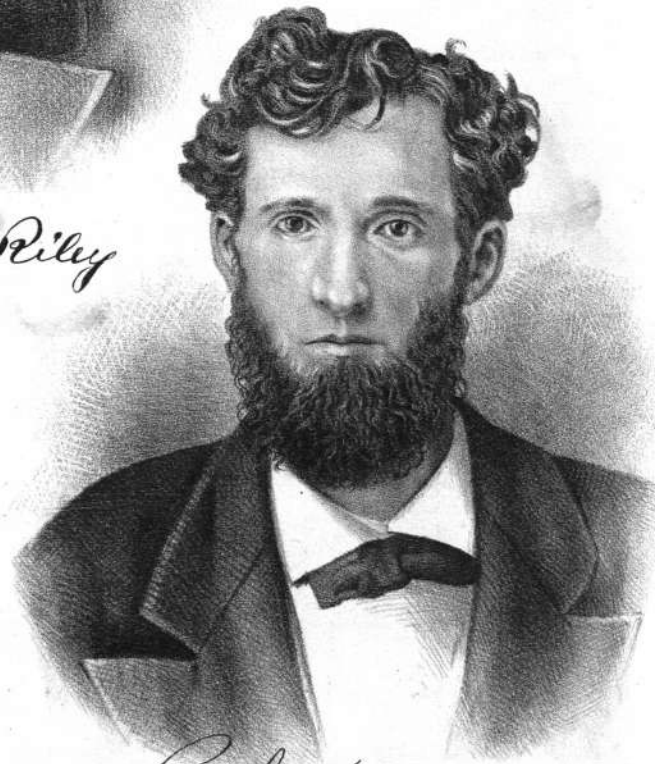
*R. Hughes*



*James M. Riley*



*C. Craig  
Recorder*



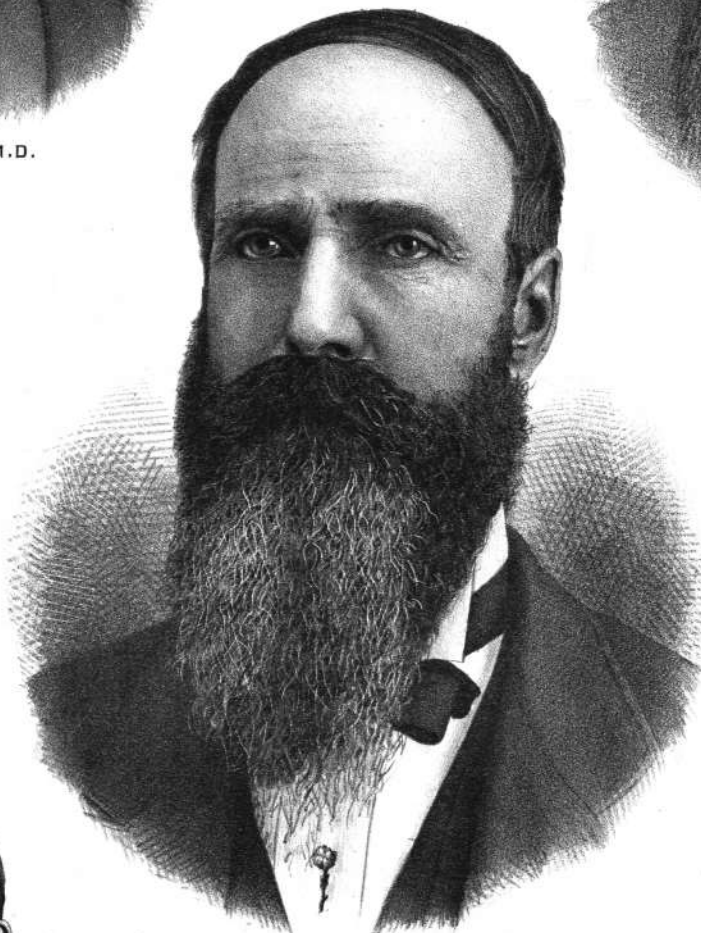
*Respectfully  
W. Frank Davis*



J.H.SNYDER, M.D.  
CAMERON, MO.



R.N.WILLIAMS,  
DRUGGIST,  
CAMERON, MO.



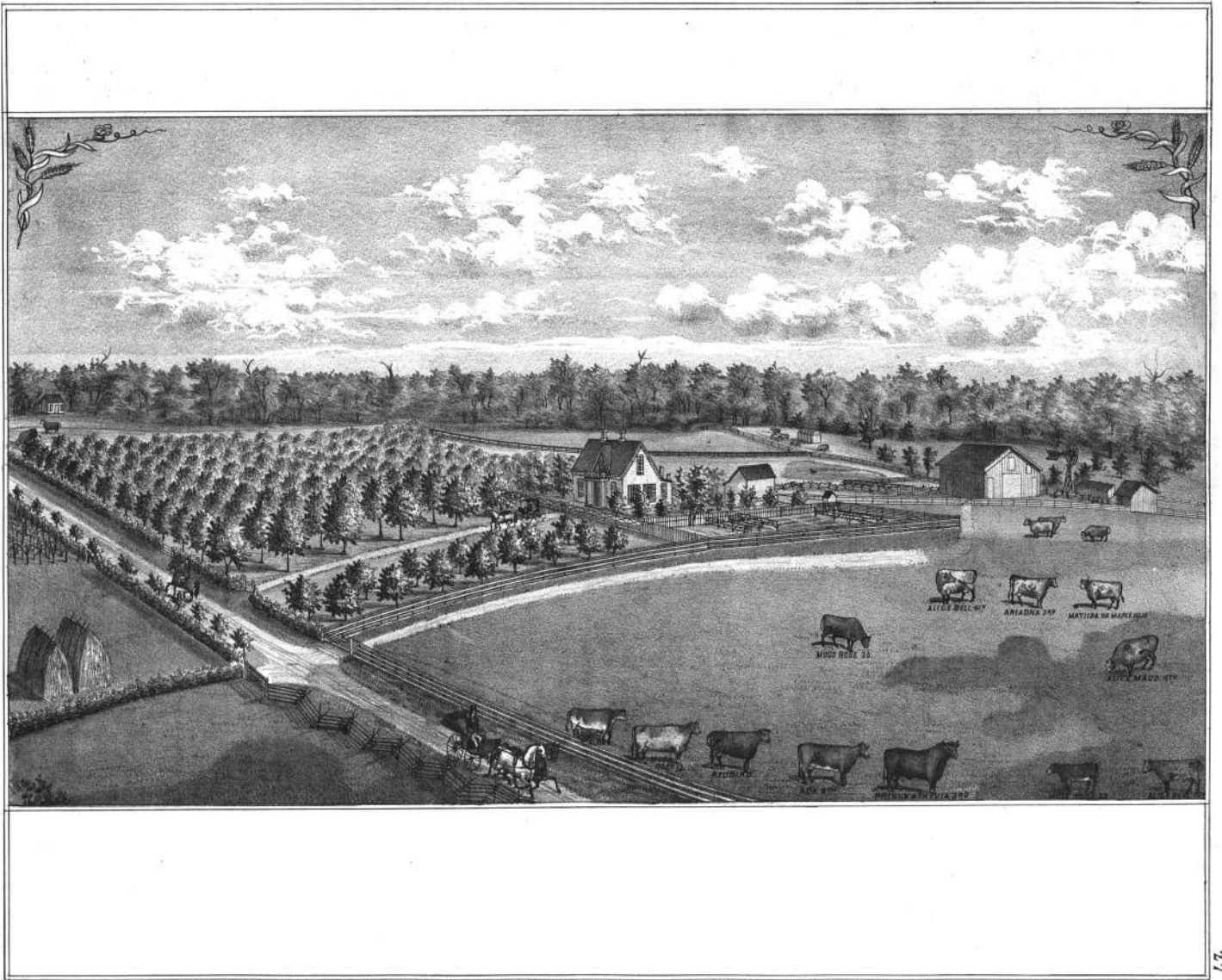
J.S.ROGERS,  
BANKER,  
CAMERON, MO.



MAJ.A.T.BAUBIE,  
CAMERON, MO.



CAPT.H.S.BEERY,  
CAMERON, MO.



RES. AND FARM OF H.C. DUNCAN AND MAPLE HILL HERD OF SHORT HORNS, 4 1/2 M. S.W. OF OSBORN, CLINTON CO. MO.  
 FIRST CLASS STOCK FOR SALE AT REASONABLE RATES



GOV. GEORGE SMITH.



ZACHARY PROVOLT  
ATTY AT LAW & J.P.  
CAMERON MO.



A.O. RISLEY M.D.  
CAMERON MO.

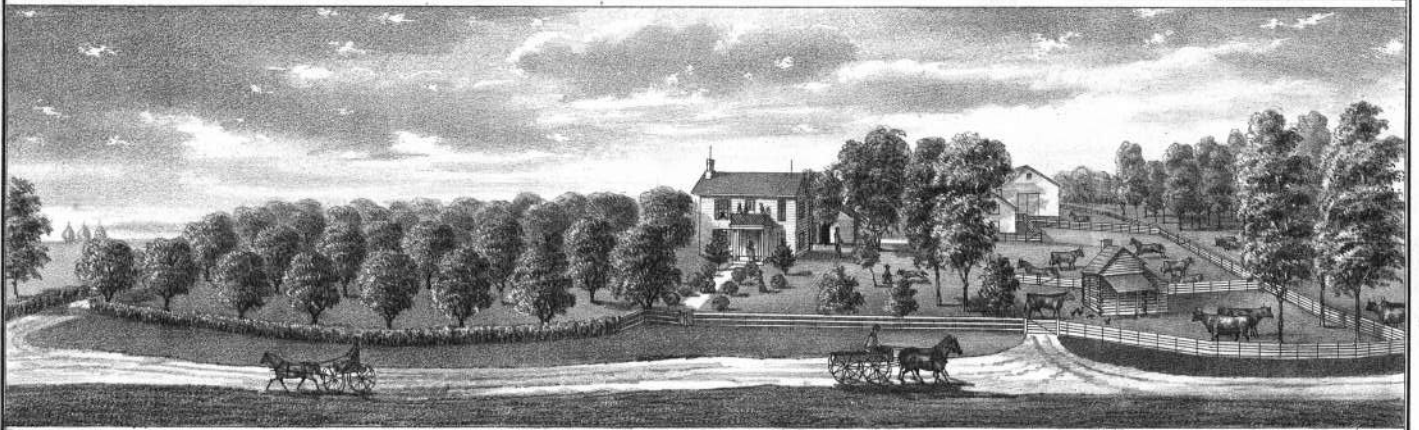


T.K. SMITH M.D.  
CAMERON MO.

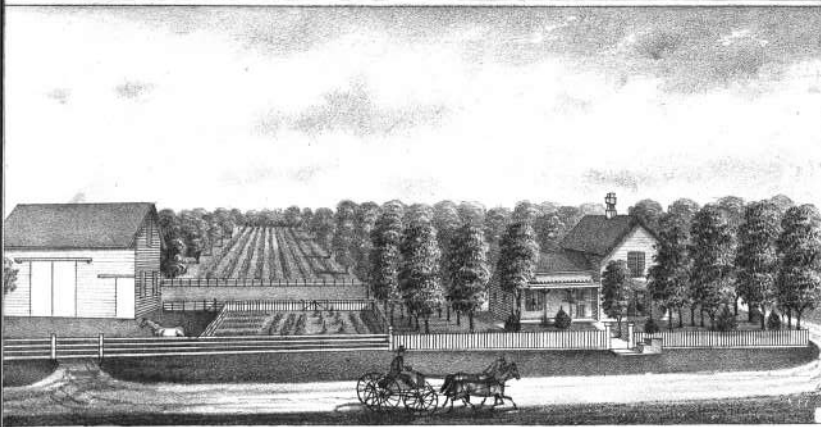


**MAPLE AVENUE FARM.**

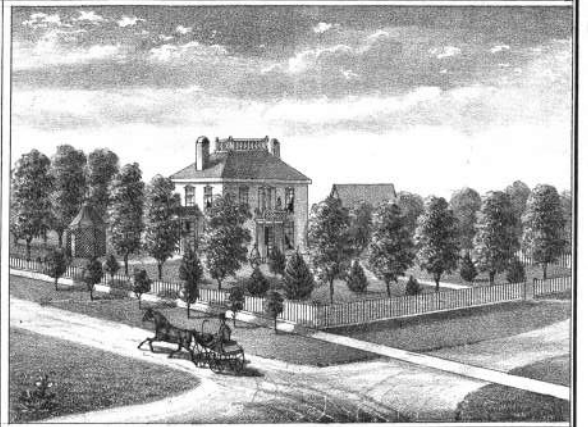
*PROPERTY OF CAPT. H. S. BUCK (BANKER AT STEWARTSVILLE) 5 1/2 M. S. W. OF STEWARTSVILLE, DEKALB CO. MO.*



FARM RESIDENCE OF WM. P. HARLAN, 5 M. S. OF CAMERON, CLINTON CO. MO.

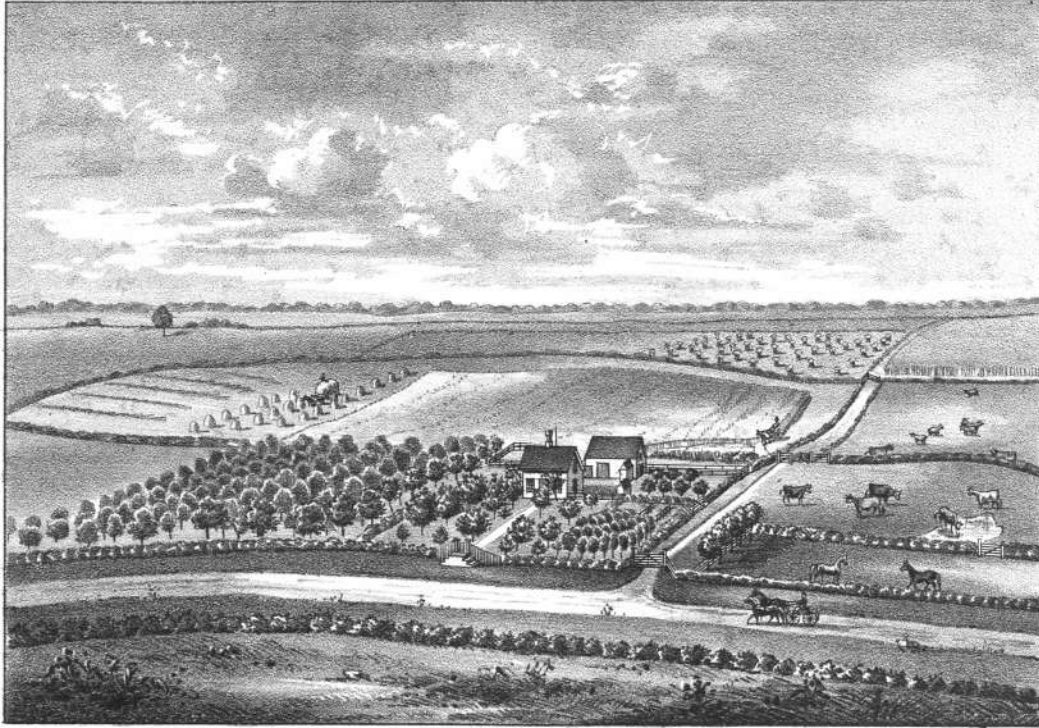


FARM RES. OF WM. W. PERRINE, 1/2 M. W. OF CAMERON, CLINTON CO. MO.

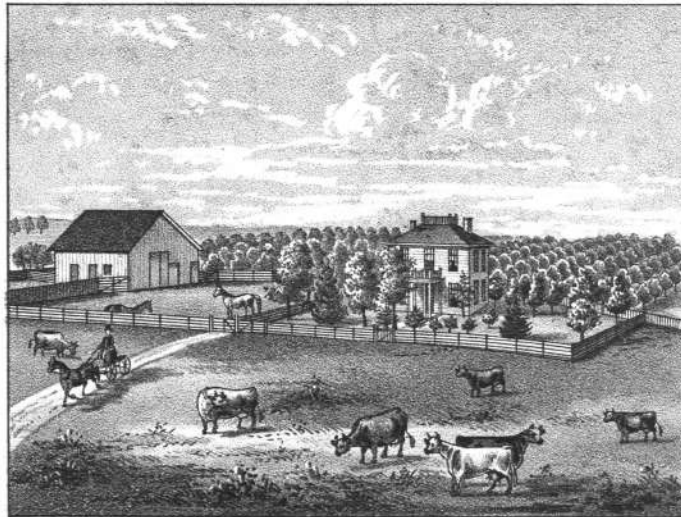


RES. OF GEO. SMITH, CAMERON, MO.





RES. AND FARM OF A.G. ROGERS, 1/2 M. E. OF LATHROP, CLINTON CO. MO.



RES. OF MICHAEL GUYER, 1/2 M. N. W. OF PLATTSBURG, MO.  
PROPRIETOR OF PLATTSBURG NURSERIES, GENERAL STOCK ON HAND AT ALL TIMES.